



## WHY ARE WE ASKING FOR YOUR HELP?

We wouldn't be such a wonderful St. Michael's family without you. Each one of us coming for various reasons. Maybe you are a lifelong parishioner, maybe you are a parent of a St. Mike's student, maybe both, or maybe you have just found us. The point is, we need each other.

We can't move forward and build up St. Michael's without you. It's time our church and school get the repairs and replacements they so desperately need. We owe it to our children, our parishioners, and ourselves. Let's Build Up St. Michael's Together!

FOR MORE INFORMATION VISIT  
OR CALL

Website : [www.stmichaelsremus.com](http://www.stmichaelsremus.com)  
Phone : +989 967 3520



All photos used were taken in May 2023 and reflects the current condition.



## WAYS YOU CAN SUPPORT ST. MICHAEL'S CAPITAL CAMPAIGN

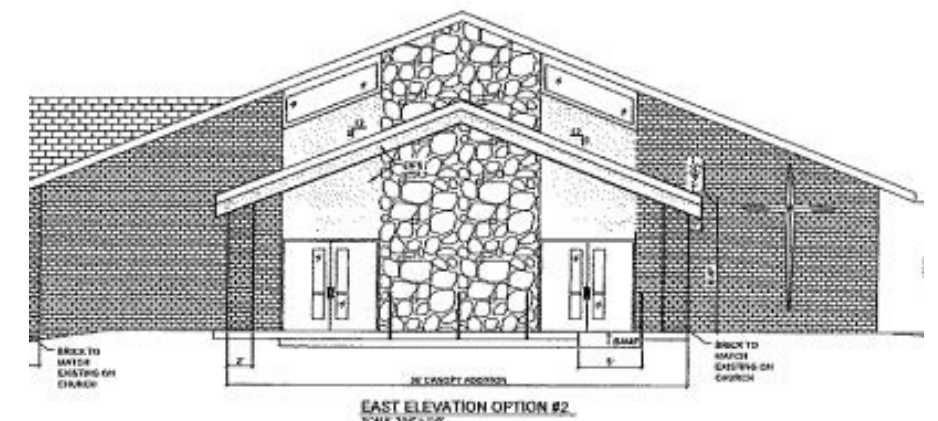
Ways to support:

Prayer - Power in Prayer

Time/Talent - Marketing, Become A Committee Member, Organize Meetings, Make Phone Calls, Show Support for the Campaign & Share with Parishioners.

Treasure - Three Year Commitment. Monthly, Quarterly, Annually, or One Time.

## *Building Up St. Michael's* PAST PRESENT FUTURE







# THE PRIORITY LIST OVER THREE YEARS

	Project	Estimated Cost
A	Septic System	\$36,000
	School Boiler System	\$126,000
	Cement/Flatwork	\$57,600
	Church Covered Entry	\$90,000
	Rectory & Office Windows	\$60,000
	School Covered Entry	\$45,000
First Priority		\$414,600
B	Church Bathrooms	\$144,000
	Enclose Church Basement Stairs	\$56,000
	Church Beautification - Drywall, Refinish Pews	\$60,000
	Gym - Floors	\$50,000
	Rectory Updates	\$40,000
	New Church Sound System	\$40,000
Second Priority		\$390,000
C	School Storage (Pavilion Area)	\$40,000
	Pave Kitchen Parking Lot	\$30,000
	Establish Capital Improvement Fund	\$125,400
Third Priority		\$195,400

Combined Total = \$1,000,000



## Building Up St. Michael's Giving Examples

Pledge	Annually	Monthly	Weekly
\$50,000	\$16,667	\$1,389	\$321
\$25,000	\$8,333	\$694	\$160
\$10,000	\$3,333	\$278	\$64
\$5,000	\$1,667	\$139	\$32
\$3,000	\$1,000	\$83	\$19
\$2,000	\$667	\$56	\$13
\$1,000	\$333	\$28	\$6
\$500	\$167	\$14	\$3



# PLEDGES & GIFTS

There are two ways to give:  
Check or Online Payment.  
Visit [www.stmichaelsremus.com](http://www.stmichaelsremus.com),  
click the "Online Giving" button,  
then click the "Building Up St.  
Michael's" icon.

PLEASE SEE COMMITMENT  
CARD FOR GIFTING  
DETAILS.

